

BETHANY POOL VILLAS



ENTIRE PROJECT IS NOW LISTED FOR SALE

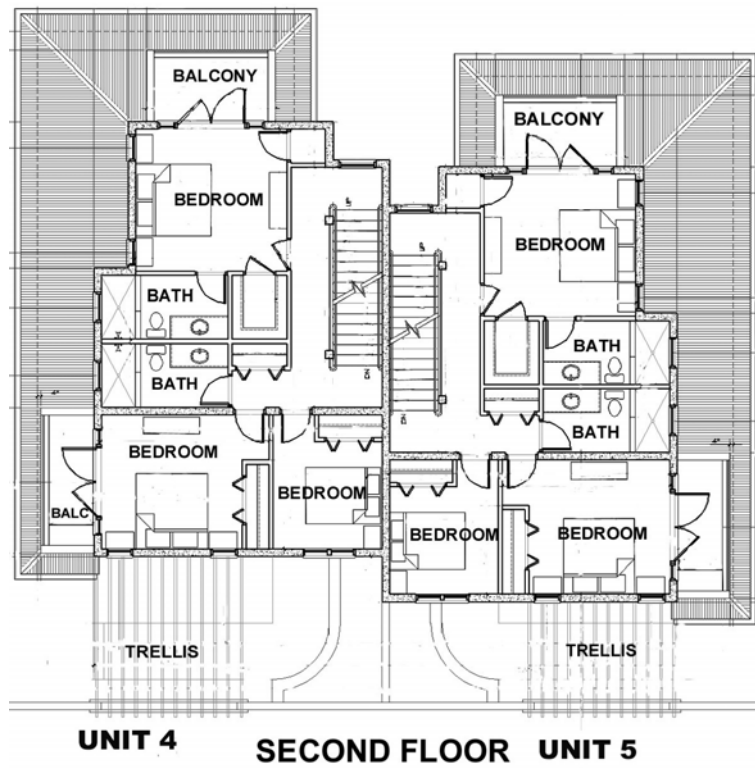
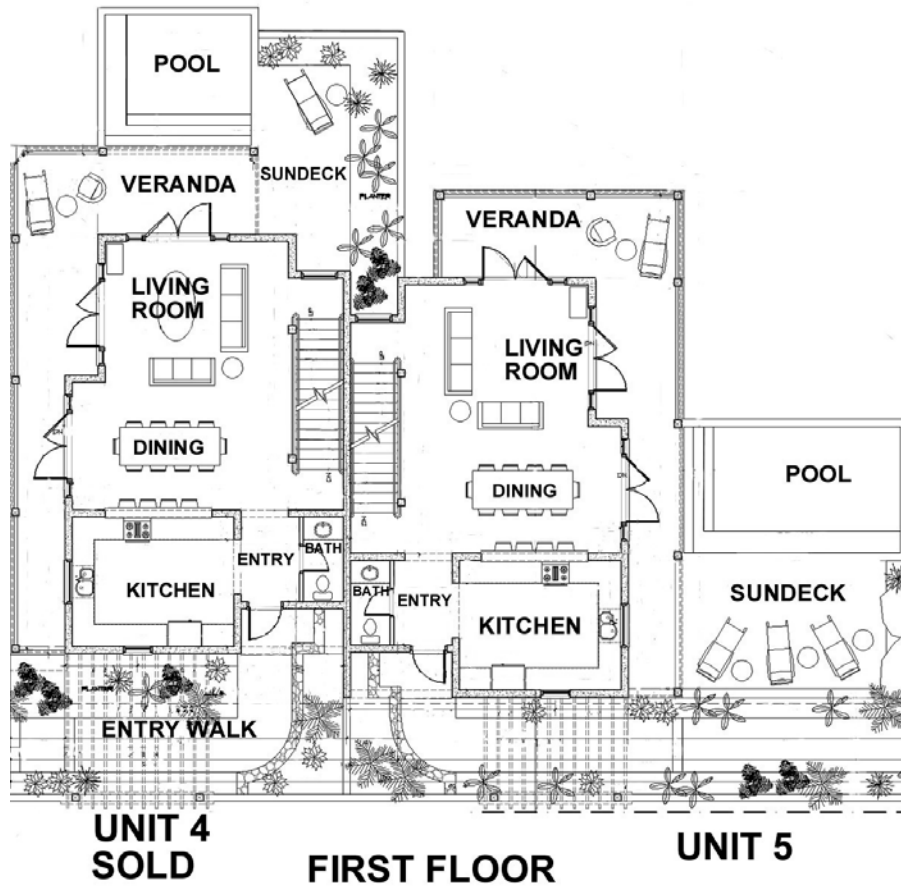
- Drawings By Barefoot Architect
- Five Condo Units In One Single And 2 Duplex Buildings
- Private Pool For Each Unit
- Fantastic Views To Grass Cay, St. Thomas And South To Great Cruz Bay And St. Croix
- Each Unit Is Over 2000 Sq Ft +/- Interior Space With Lots Of Covered Verandahs And Sun Decks
- Five Minutes To Town On Paved South Shore Road
- Newly Paved Access Road From Centerline

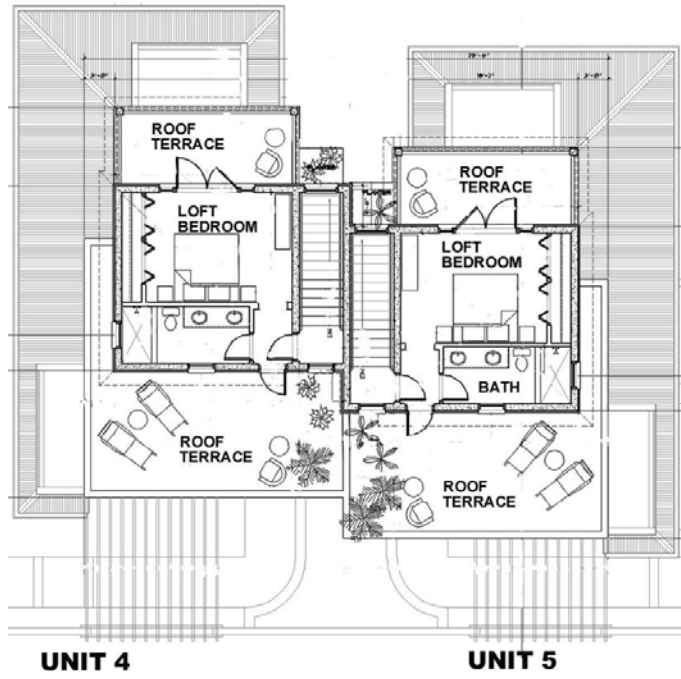
**Call Islandia Real Estate For Details
340-776-6666**

BETHANY POOL VILLAS

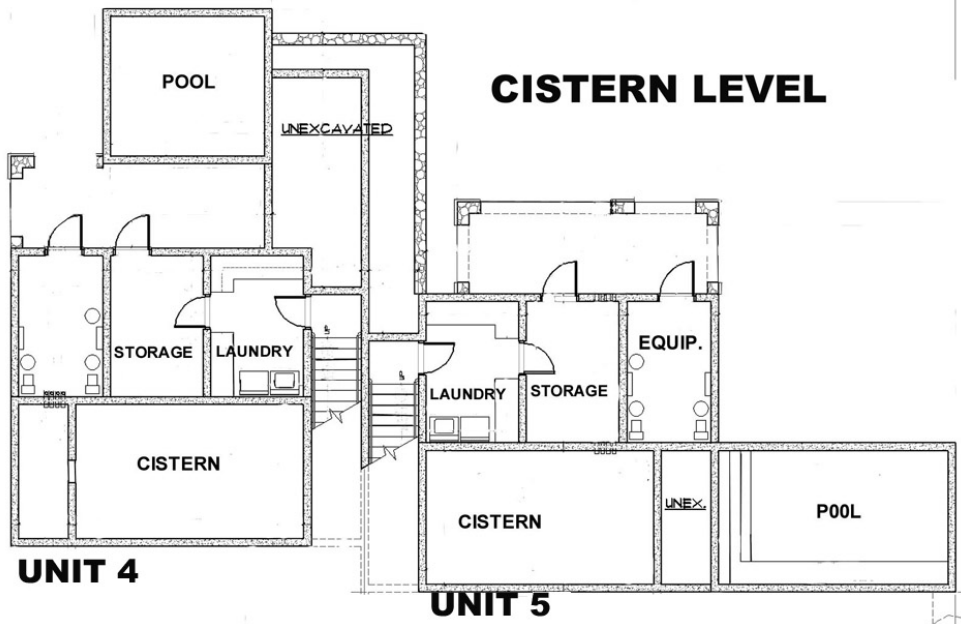




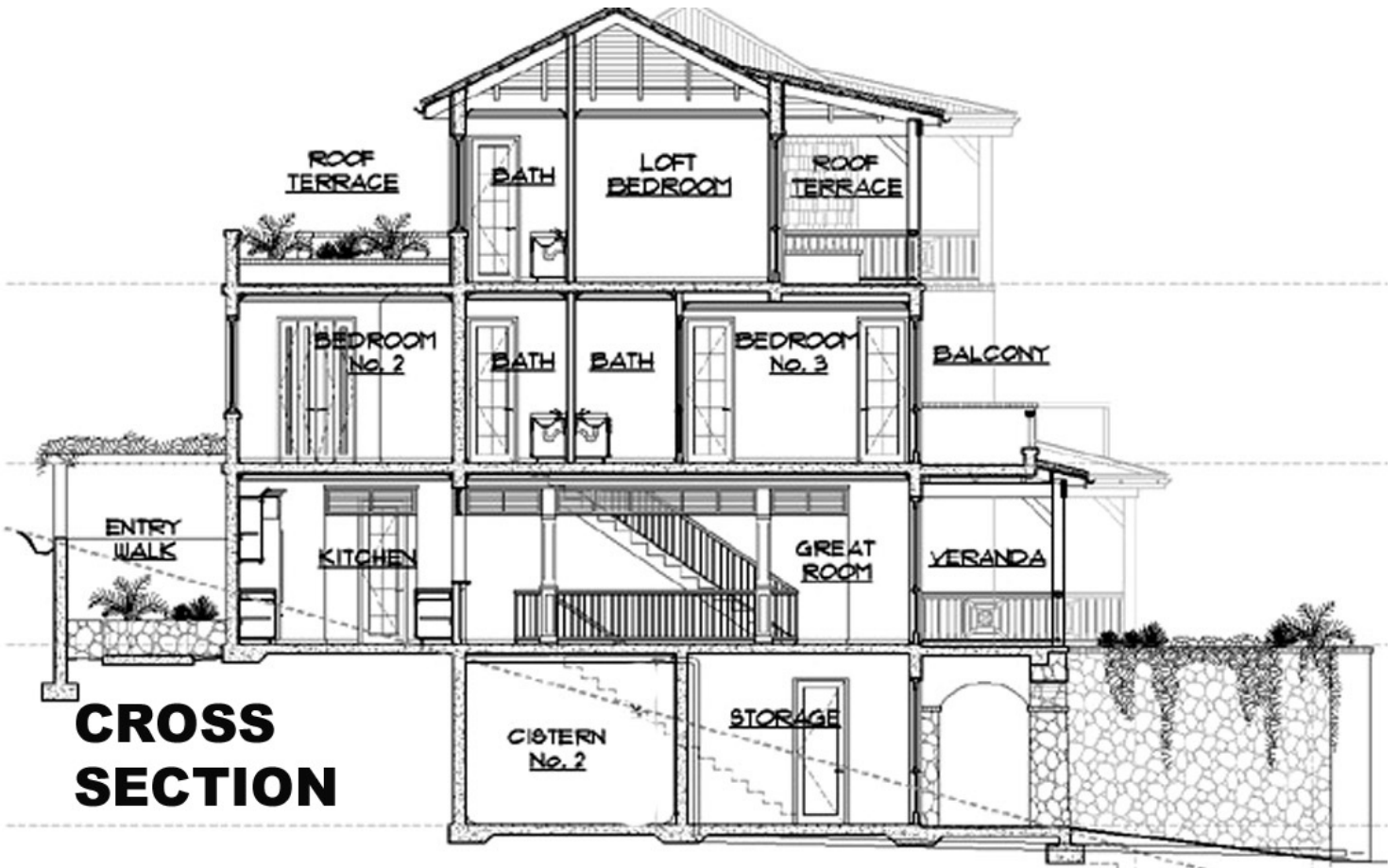




LOFT FLOOR



CISTERN LEVEL



CROSS SECTION



WEST ELEVATION